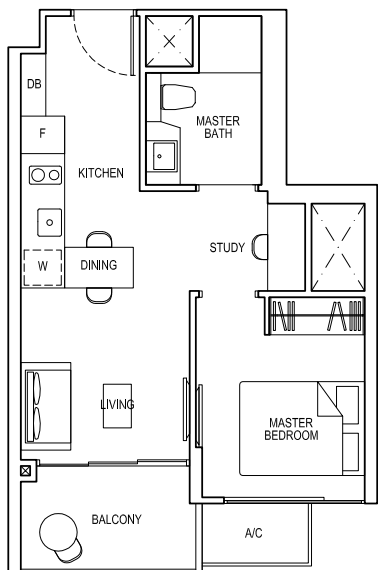


1-BEDROOM + STUDY

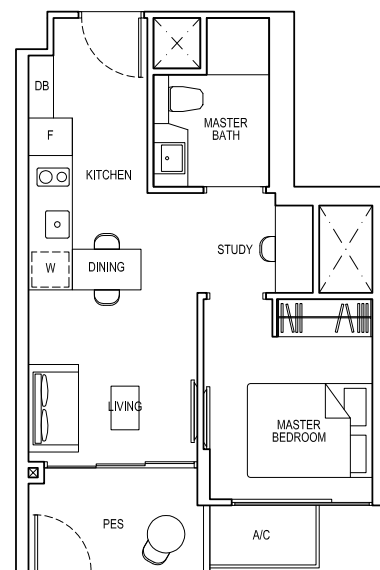
TYPE 1S1

Area: 42 sq m (include 2 sq m A/C LEDGE, 5 sq m BALCONY)
 Unit(s): #02-48 TO #14-48
 #02-49* TO #14-49*



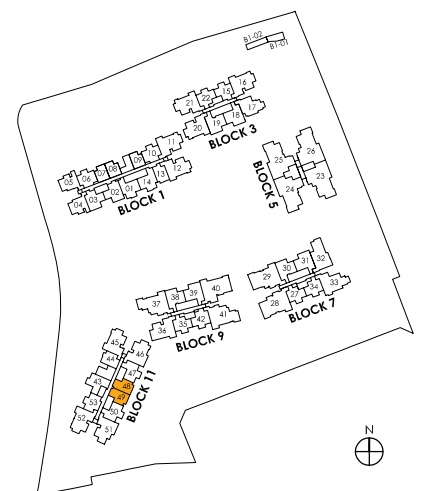
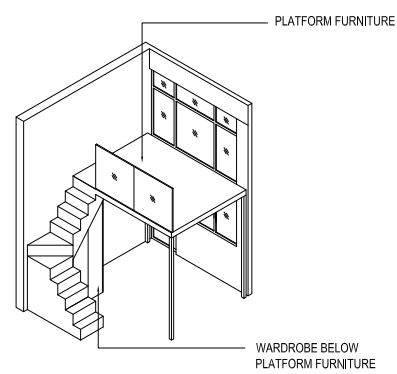
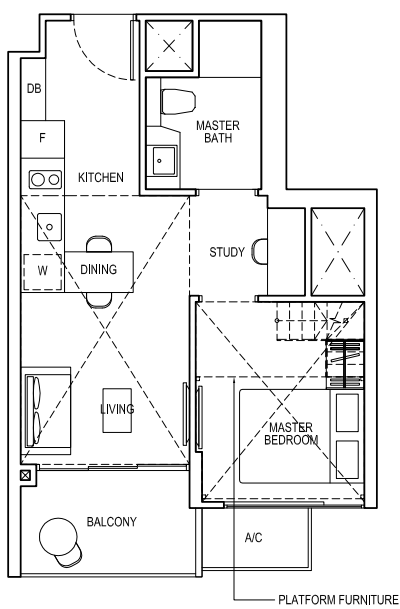
TYPE 1S1-G

Area: 42 sq m (include 2 sq m A/C LEDGE, 5 sq m PES)
 Unit(s): #01-48
 #01-49*



TYPE 1S1-PH

Area: 64 sq m (include 2 sq m A/C LEDGE, 5 sq m BALCONY, 22 sq m VOID)
 Unit(s): #15-48
 #15-49*

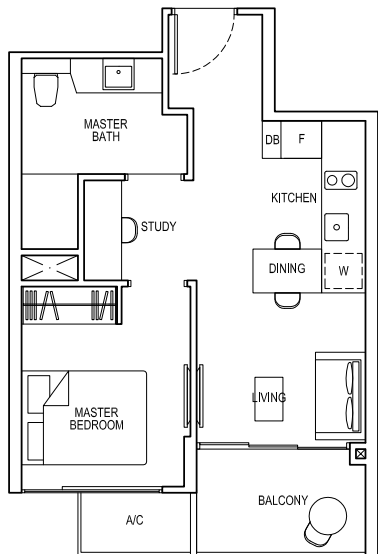


NOTE:
 * Mirror image
 ** Isometric views have excluded railing drawings for the steps
 Plans are subject to change/amendments as may be required and/or approved by the Developer and/or the relevant authorities and do not form part of any offer or contract. These are not drawn to scale and are for the purpose of visual presentation only.

1-BEDROOM + STUDY

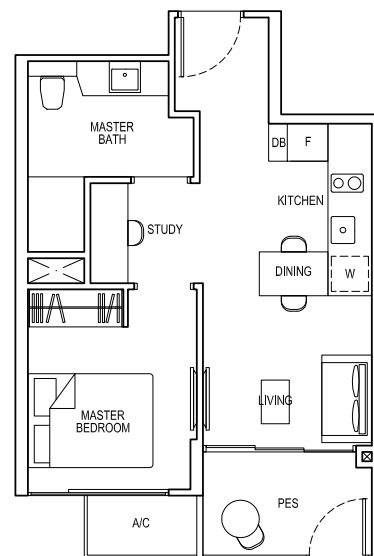
TYPE 1S2

Area: 44 sq m (include 2 sq m A/C LEDGE, 5 sq m BALCONY)
Unit(s): #02-13 TO #14-13



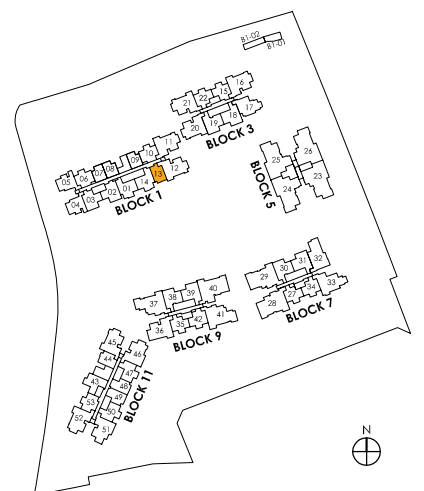
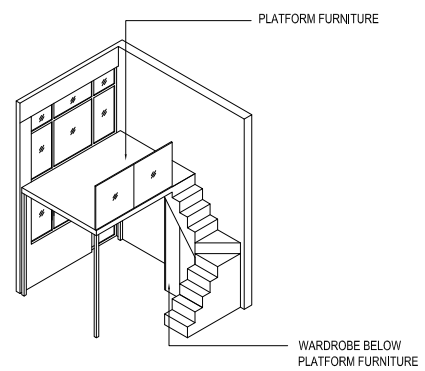
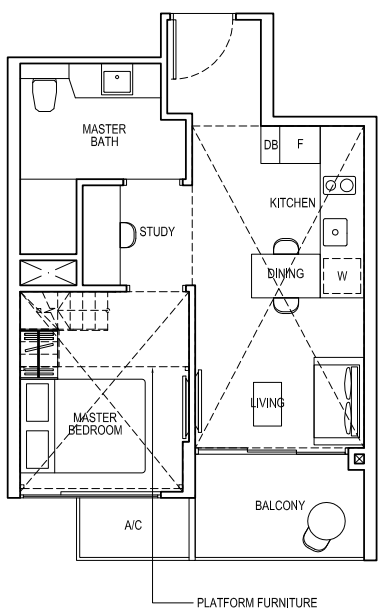
TYPE 1S2-G

Area: 44 sq m (include 2 sq m A/C LEDGE, 5 sq m PES)
Unit(s): #01-13



TYPE 1S2-PH

Area: 69 sq m (include 2 sq m A/C LEDGE, 5 sq m BALCONY, 25 sq m VOID)
Unit(s): #15-13



NOTE:

** Isometric views have excluded railing drawings for the steps
Plans are subject to change/amendments as may be required and/or approved by the Developer and/or the relevant authorities and do not form part of any offer or contract. These are not drawn to scale and are for the purpose of visual presentation only.