

# 1-BEDROOM

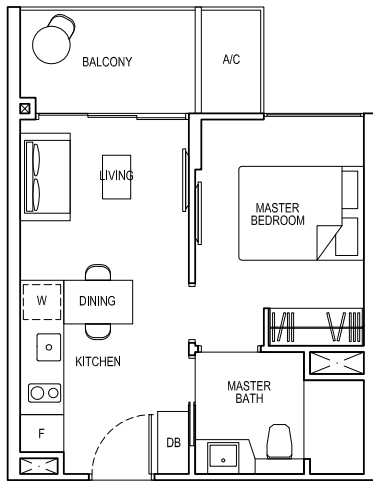
## TYPE 1B1

Area: 39 sq m (include 2 sq m A/C LEDGE, 5 sq m BALCONY)

Unit(s): #05-07\* TO #14-07\*

#05-08 TO #14-08

#05-09 TO #14-09



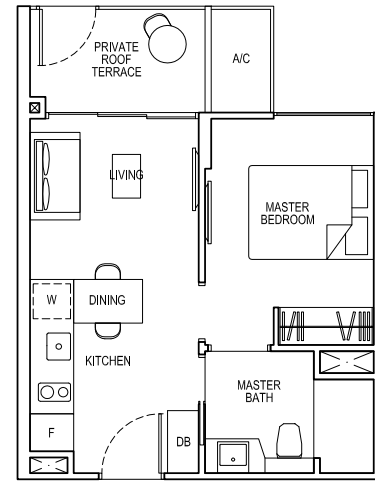
## TYPE 1B1-G

Area: 39 sq m (include 2 sq m A/C LEDGE, 5 sq m PRIVATE ROOF TERRACE)

Unit(s): #04-07\*

#04-08

#04-09



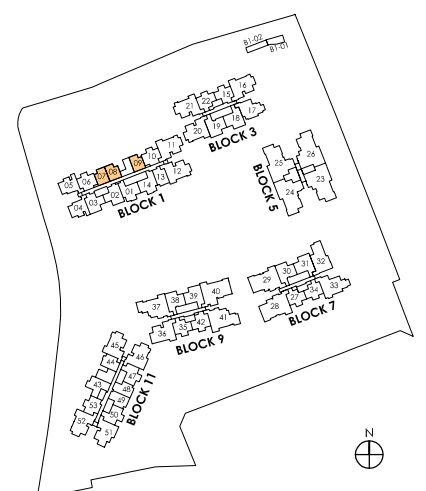
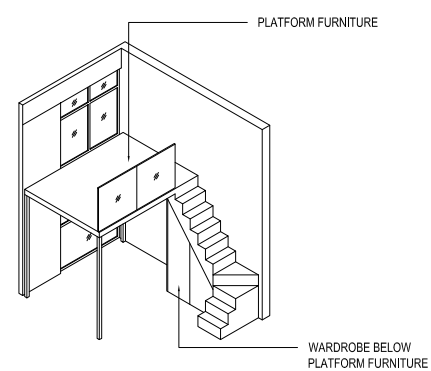
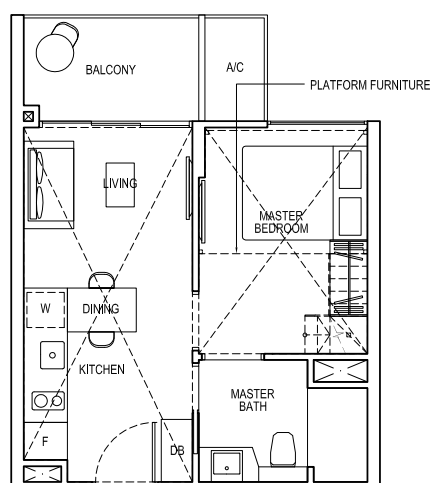
## TYPE 1B1-PH

Area: 66 sq m (include 2 sq m A/C LEDGE, 5 sq m BALCONY, 27 sq m VOID)

Unit(s): #15-07\*

#15-08

#15-09



NOTE:

\* Mirror image

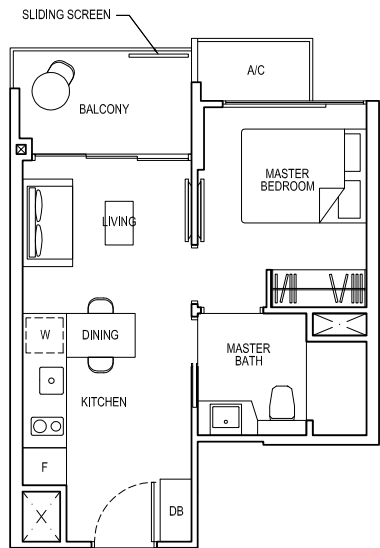
\*\* Isometric views have excluded railing drawings for the steps

Plans are subject to change/amendments as may be required and/or approved by the Developer and/or the relevant authorities and do not form part of any offer or contract. These are not drawn to scale and are for the purpose of visual presentation only.

# 1-BEDROOM

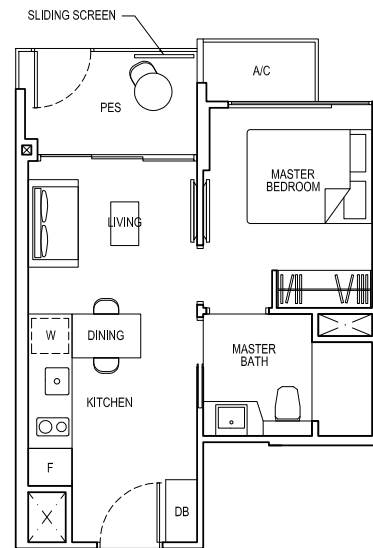
## TYPE 1B2

Area: 39 sq m (include 2 sq m A/C LEDGE, 5 sq m BALCONY)  
Unit(s): #02-44 TO #14-44



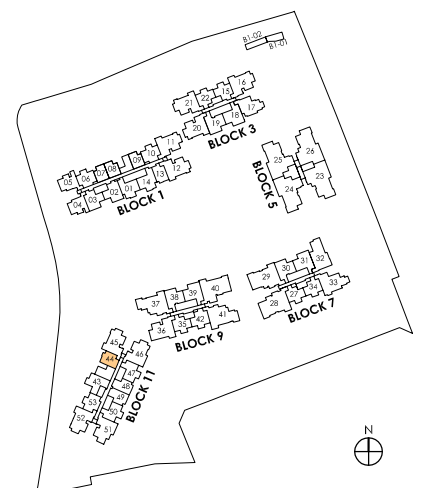
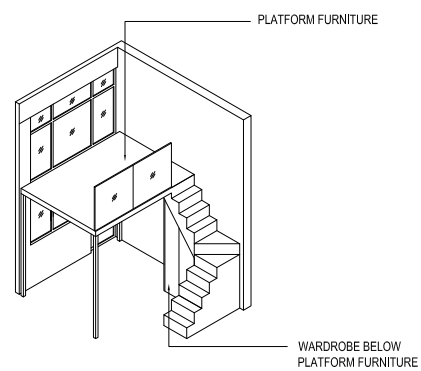
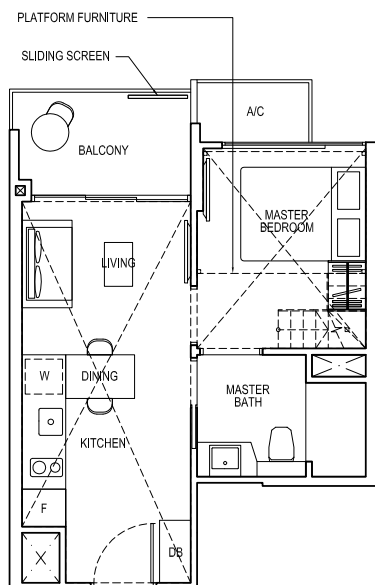
## TYPE 1B2-G

Area: 39 sq m (include 2 sq m A/C LEDGE, 5 sq m PES)  
Unit(s): #01-44



## TYPE 1B2-PH

Area: 66 sq m (include 2 sq m A/C LEDGE, 5 sq m BALCONY, 27 sq m VOID)  
Unit(s): #15-44



NOTE:

\*\* Isometric views have excluded railing drawings for the steps  
Plans are subject to change/amendments as may be required and/or approved by the Developer and/or the relevant authorities and do not form part of any offer or contract. These are not drawn to scale and are for the purpose of visual presentation only.