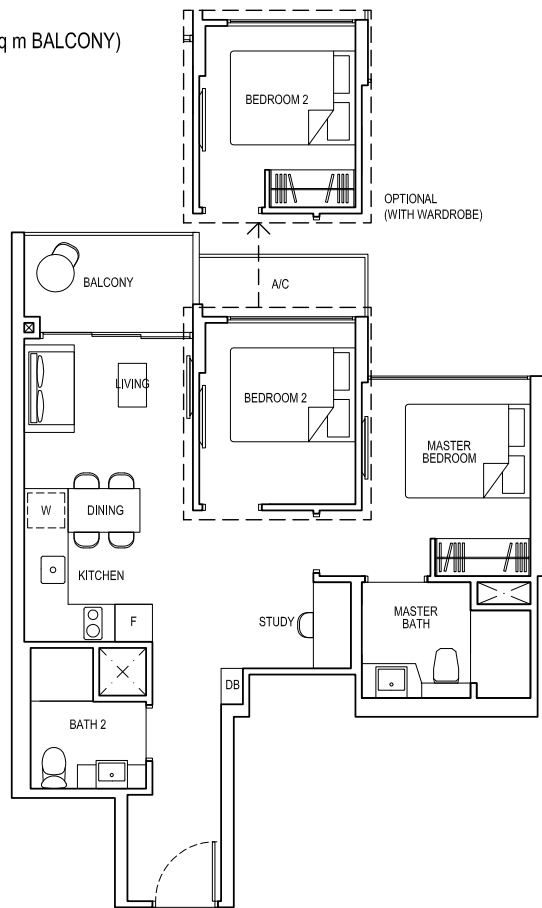


# 2-BEDROOM + STUDY

## TYPE 2S1

Area: 62 sq m (include 3 sq m A/C LEDGE, 5 sq m BALCONY)

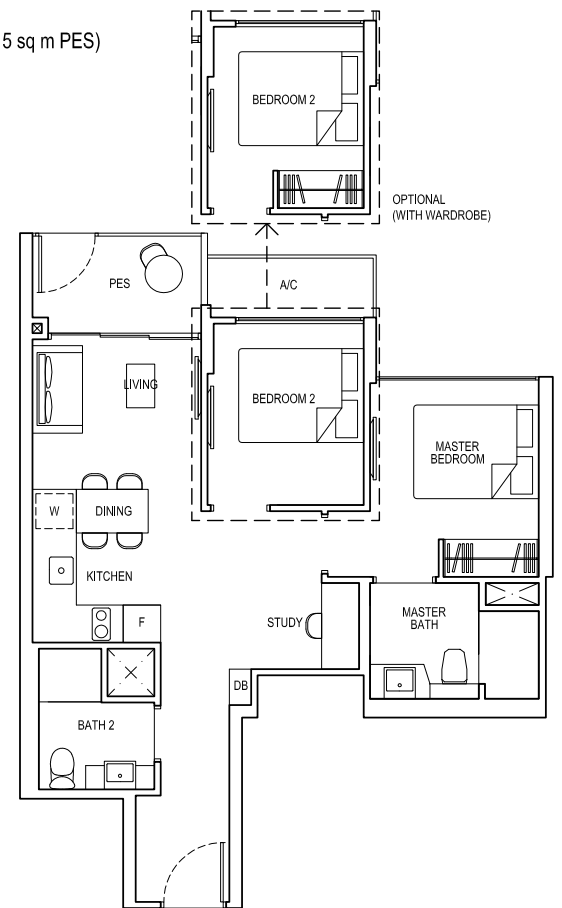
Unit(s): #02-18 TO #13-18  
 #02-19\* TO #13-19\*  
 #02-30 TO #13-30  
 #02-31\* TO #13-31\*  
 #02-38 TO #14-38  
 #02-39\* TO #14-39\*



## TYPE 2S1-G

Area: 62 sq m (include 3 sq m A/C LEDGE, 5 sq m PES)

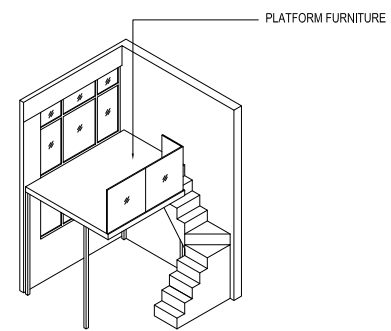
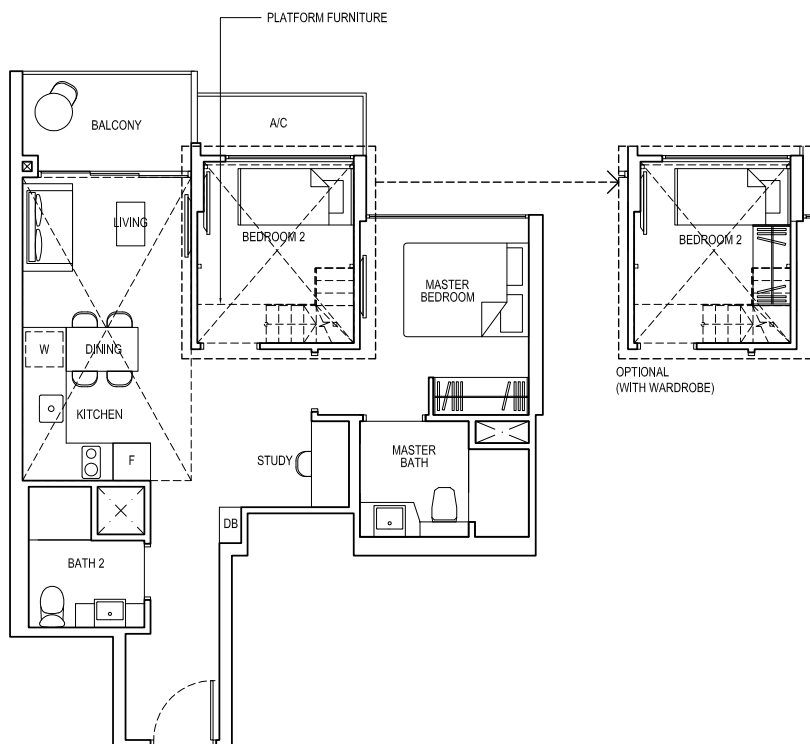
Unit(s): #01-18  
 #01-19\*  
 #01-30  
 #01-31\*  
 #01-38  
 #01-39\*



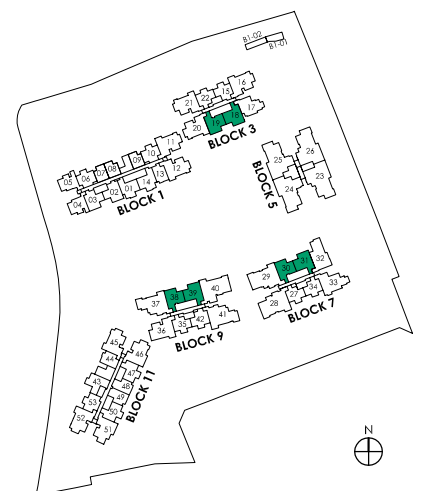
## TYPE 2S1-PH

Area: 84 sq m (include 3 sq m A/C LEDGE, 5 sq m BALCONY, 22 sq m VOID)

Unit(s): #14-18  
 #14-19\*  
 #14-30  
 #14-31\*  
 #15-38  
 #15-39\*



ISOMETRIC VIEW\*\*



NOTE:  
 \* Mirror image  
 \*\* Isometric views have excluded railing drawings for the steps  
 Plans are subject to change/amendments as may be required and/or approved by the Developer and/or the relevant authorities and do not form part of any offer or contract. These are not drawn to scale and are for the purpose of visual presentation only.