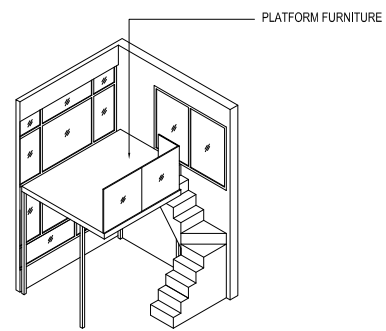
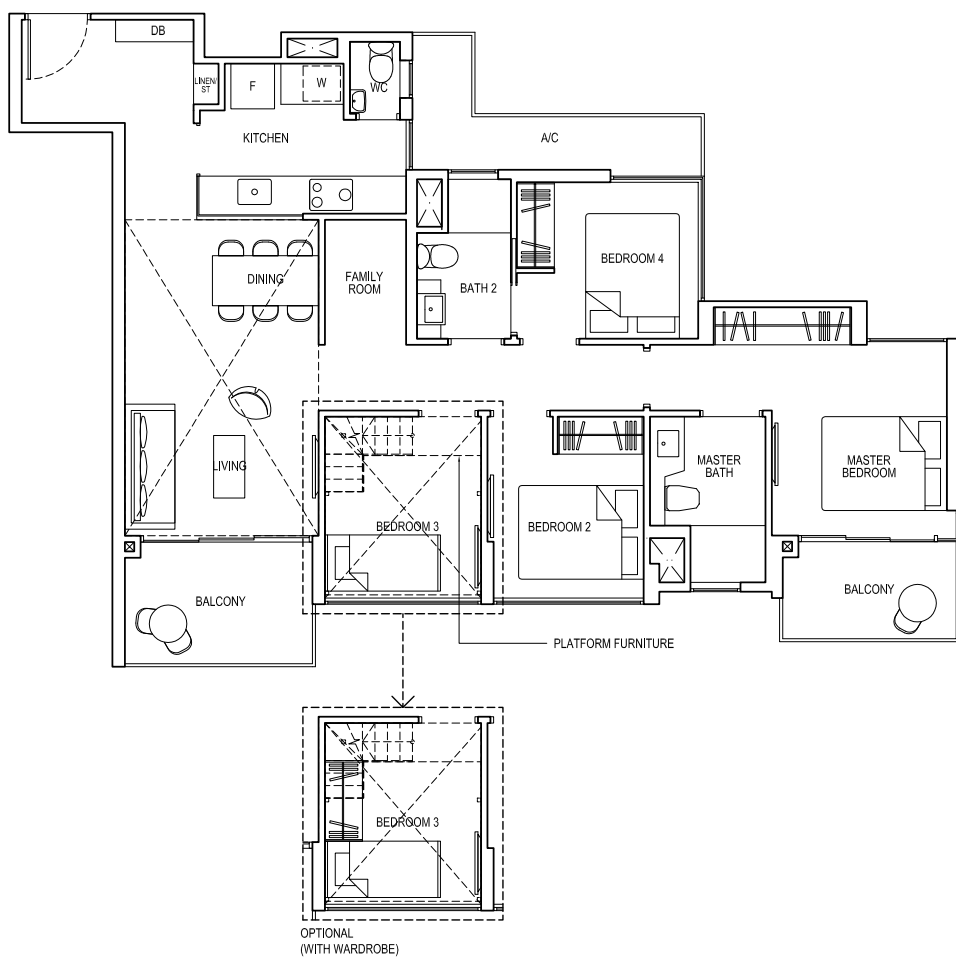




# 4-BEDROOM COMPACT

## TYPE 4C1-PH

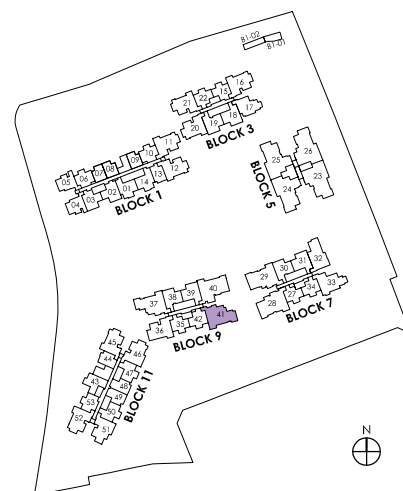
Area: 130 sq m (include 6 sq m A/C LEDGE, 12 sq m BALCONY, 25 sq m VOID)  
Unit(s): #15-41



ISOMETRIC VIEW\*\*

NOTE:

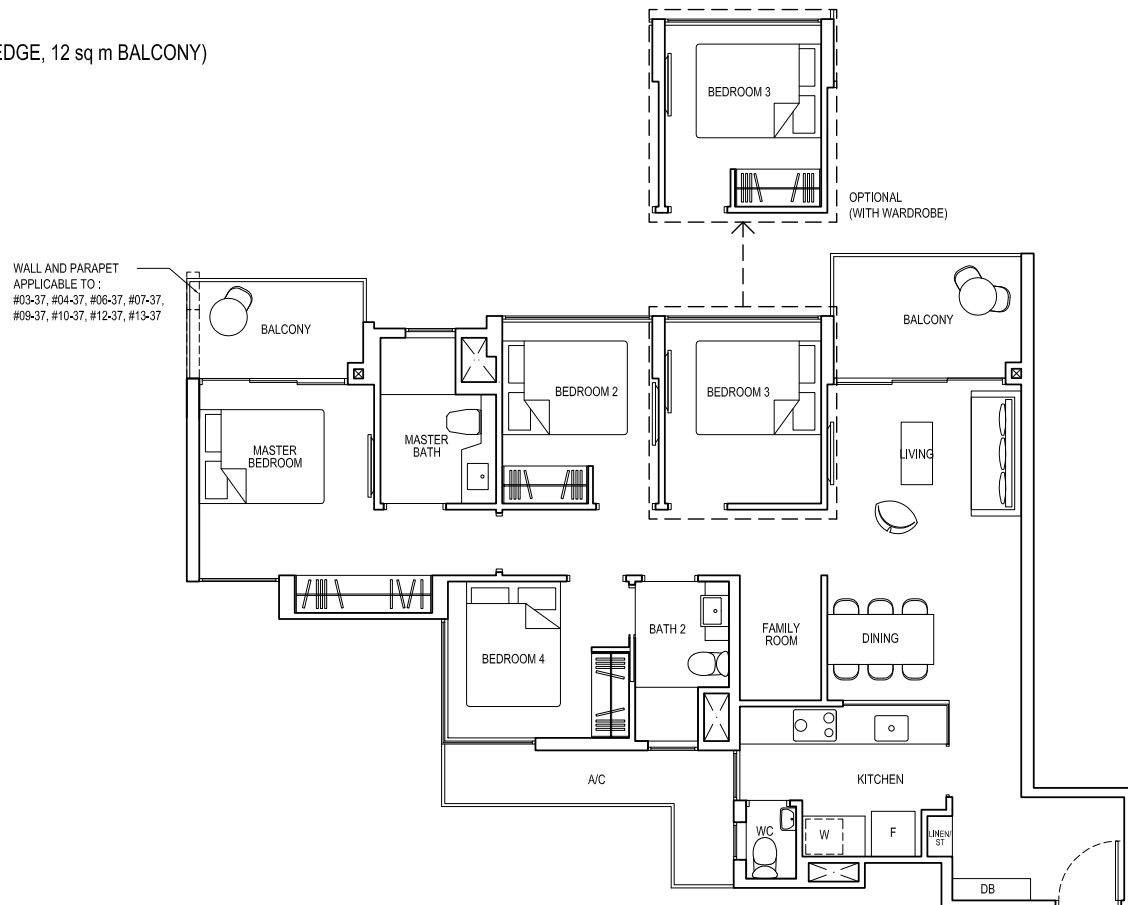
\*\* Isometric views have excluded railing drawings for the steps  
Plans are subject to change/amendments as may be required and/or approved by the Developer and/or the relevant authorities and do not form part of any offer or contract. These are not drawn to scale and are for the purpose of visual presentation only.



# 4-BEDROOM COMPACT

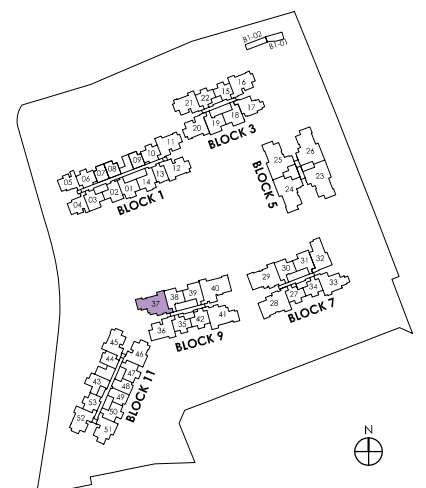
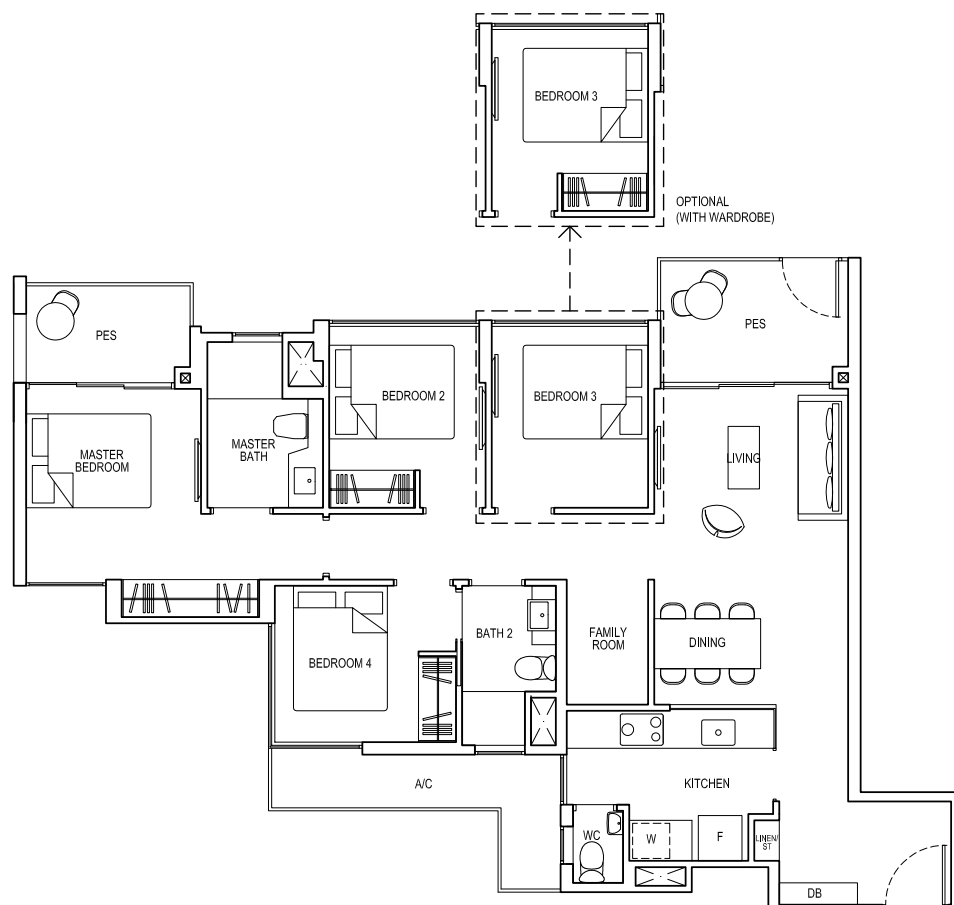
## TYPE 4C1a

Area: 105 sq m (include 6 sq m A/C LEDGE, 12 sq m BALCONY)  
Unit(s): #02-37 TO #14-37



## TYPE 4C1a-G

Area: 105 sq m (include 6 sq m A/C LEDGE, 12 sq m PES)  
Unit(s): #01-37

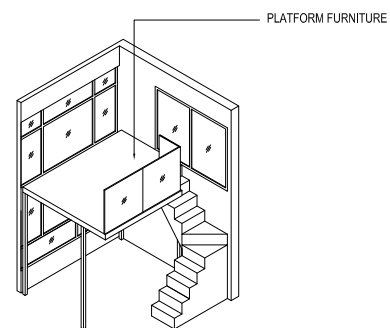
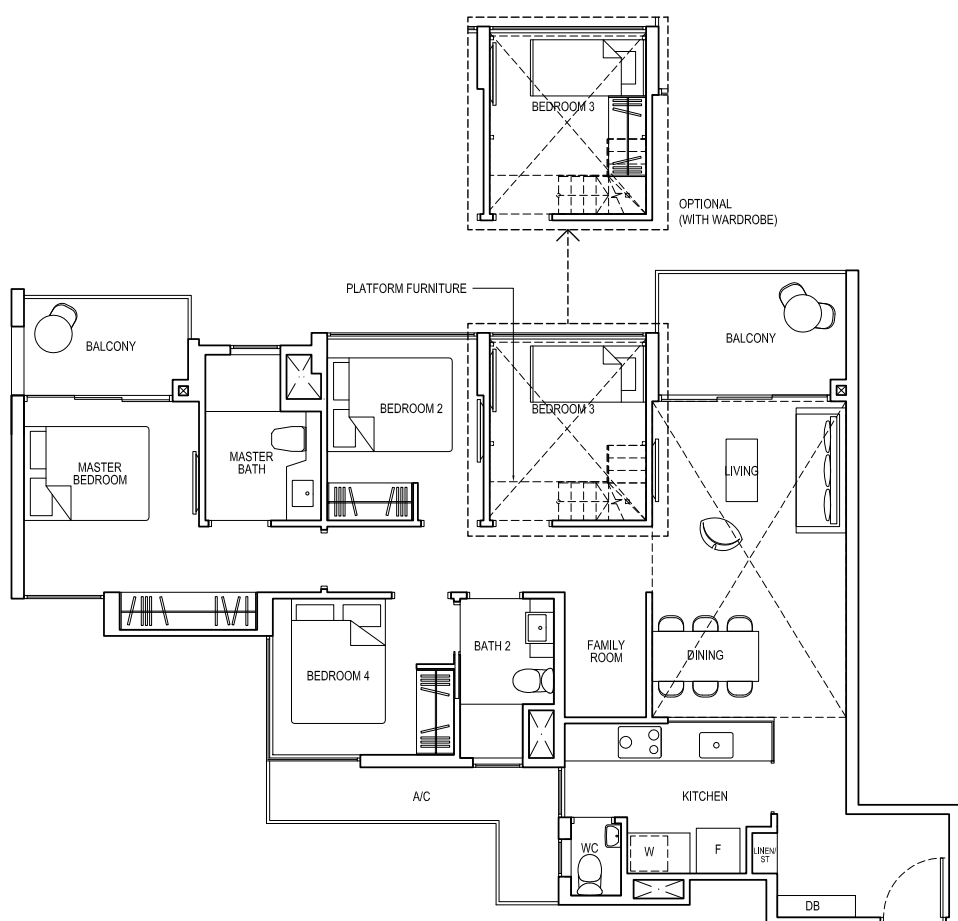


# 4-BEDROOM COMPACT

## TYPE 4C1a-PH

Area: 130 sq m (include 6 sq m A/C LEDGE, 12 sq m BALCONY, 25 sq m VOID)

Unit(s): #15-37



ISOMETRIC VIEW\*\*

NOTE:

\*\* Isometric views have excluded railing drawings for the steps

Plans are subject to change/amendments as may be required and/or approved by the Developer and/or the relevant authorities and do not form part of any offer or contract. These are not drawn to scale and are for the purpose of visual presentation only.

