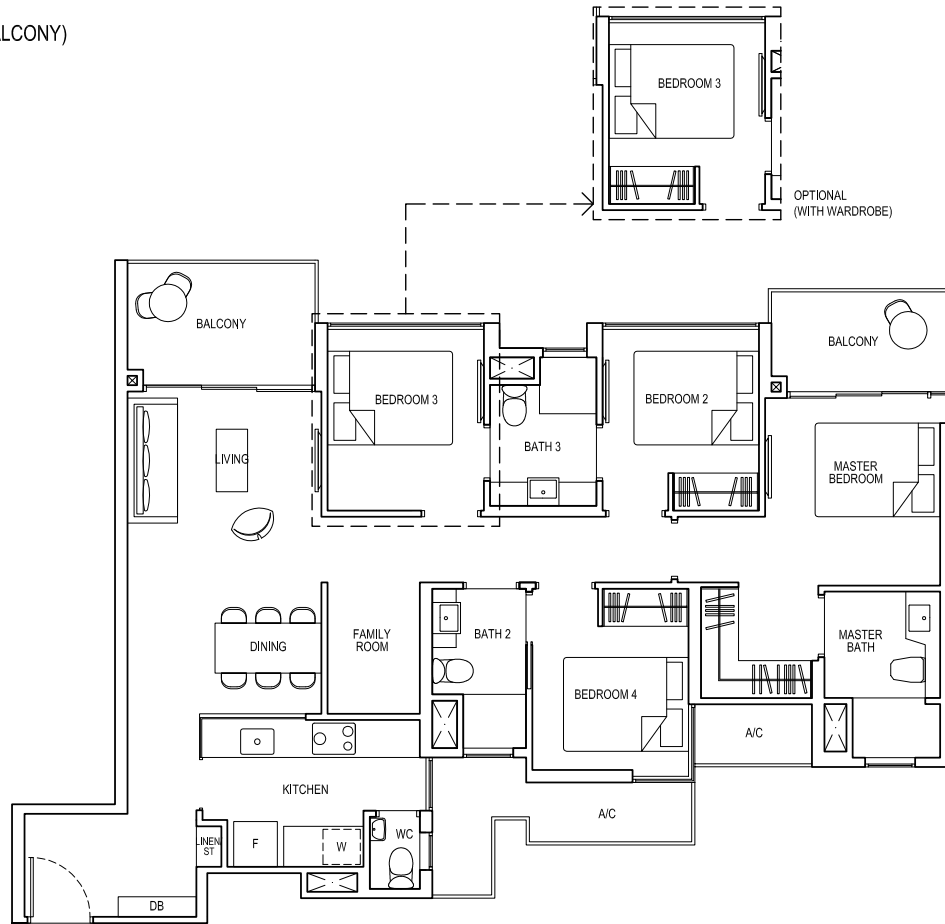


4-BEDROOM DELUXE

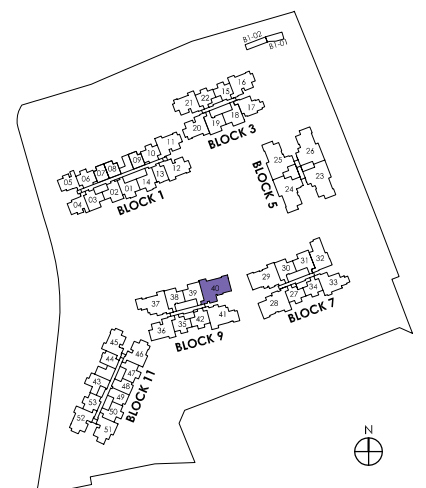
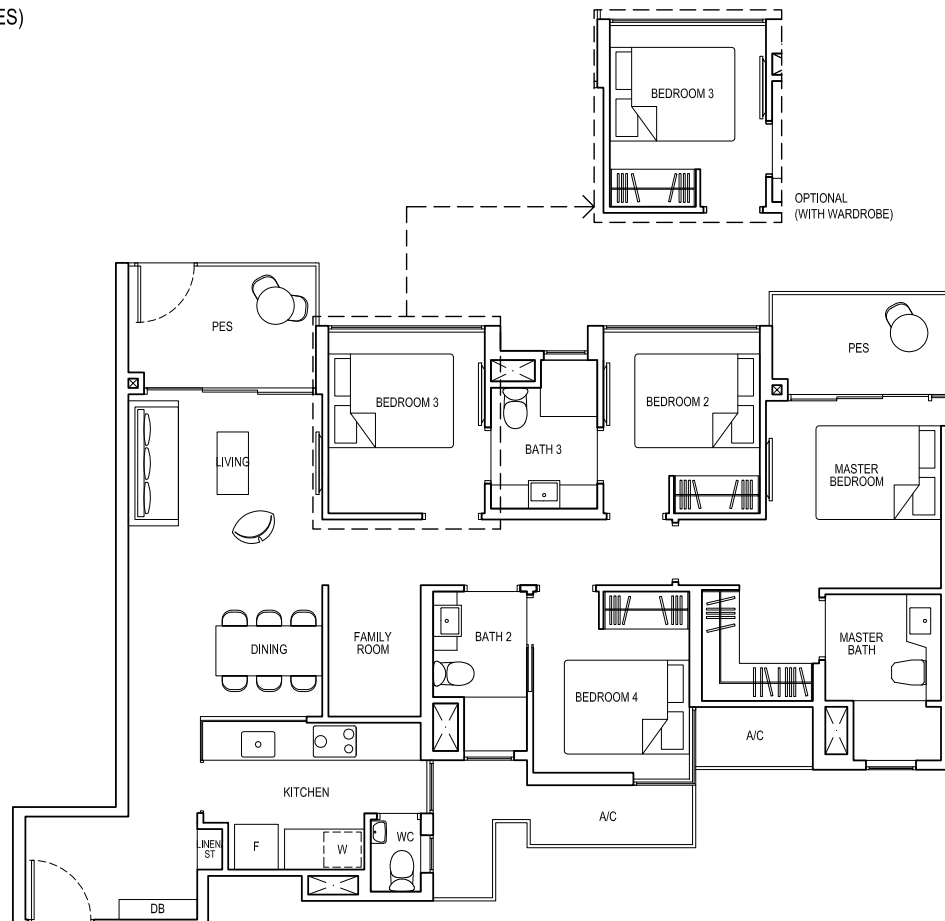
TYPE 4D1

Area: 115 sq m (include 8 sq m A/C LEDGE, 12 sq m BALCONY)
Unit(s): #02-40 TO #14-40



TYPE 4D1-G

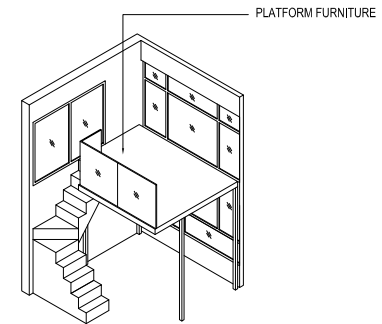
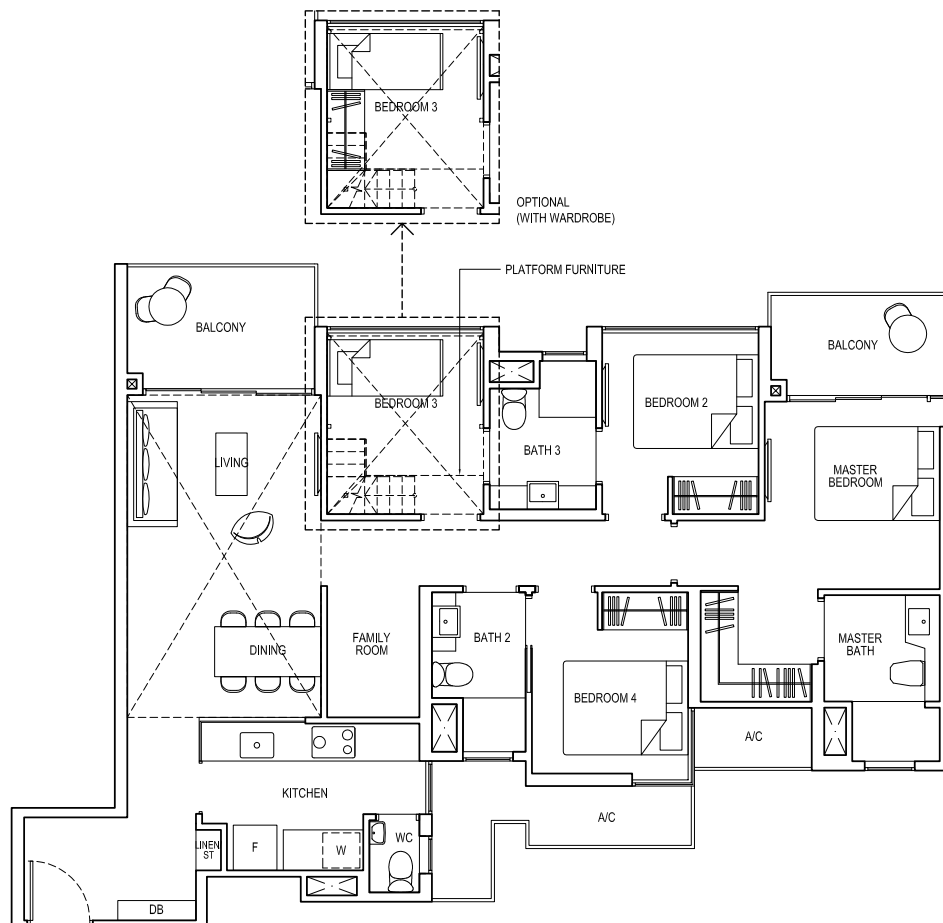
Area: 115 sq m (include 8 sq m A/C LEDGE, 12 sq m PES)
Unit(s): #01-40



4-BEDROOM DELUXE

TYPE 4D1-PH

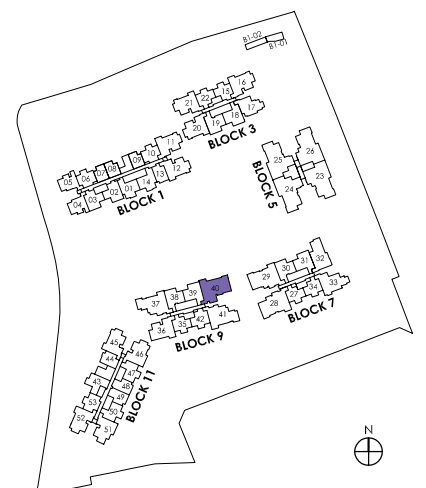
Area: 140 sq m (include 8 sq m A/C LEDGE, 12 sq m BALCONY, 25 sq m VOID)
Unit(s): #15-40



ISOMETRIC VIEW**

NOTE:

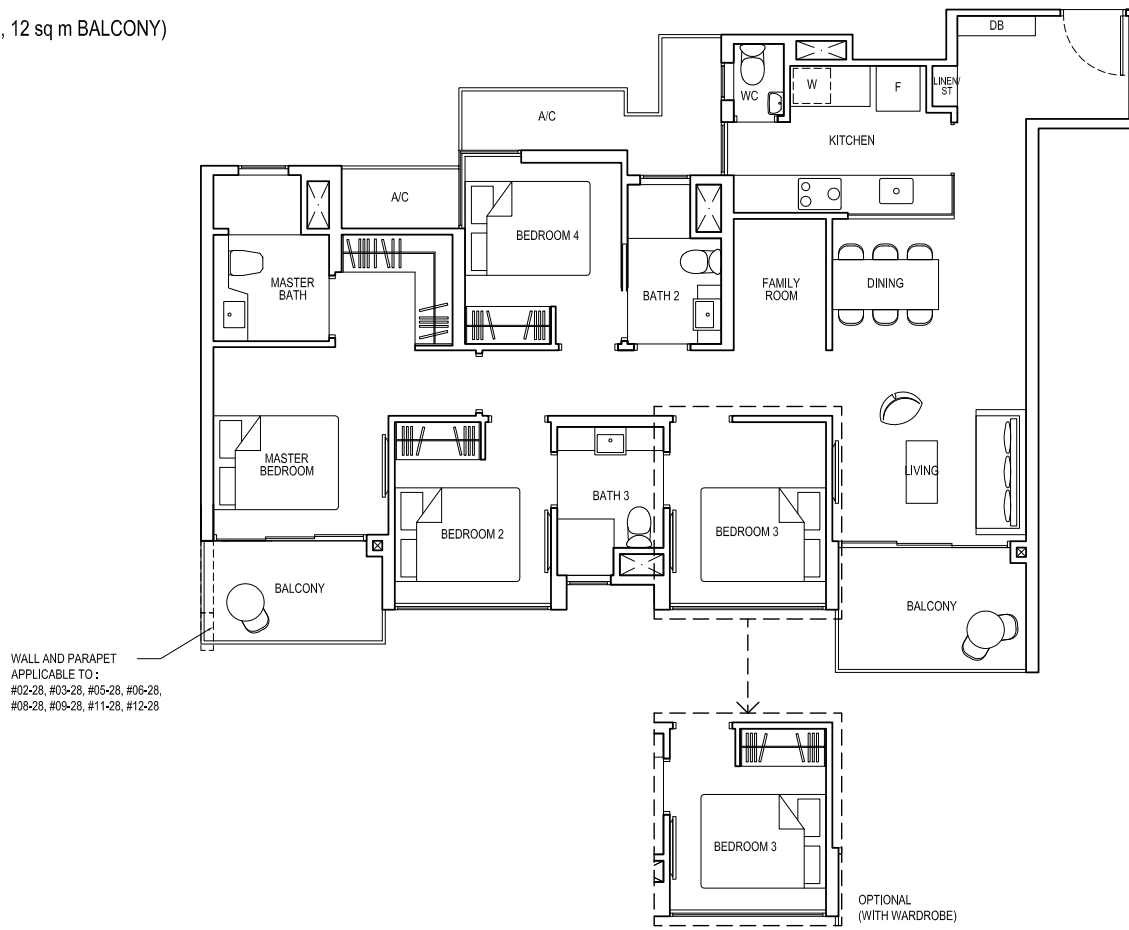
** Isometric views have excluded railing drawings for the steps
Plans are subject to change/amendments as may be required and/or approved by the Developer and/or the relevant authorities and do not form part of any offer or contract. These are not drawn to scale and are for the purpose of visual presentation only.



4-BEDROOM DELUXE

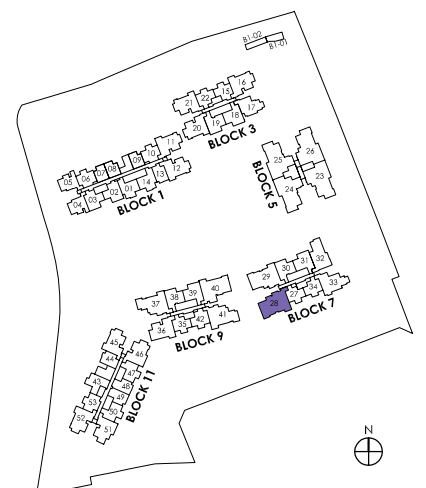
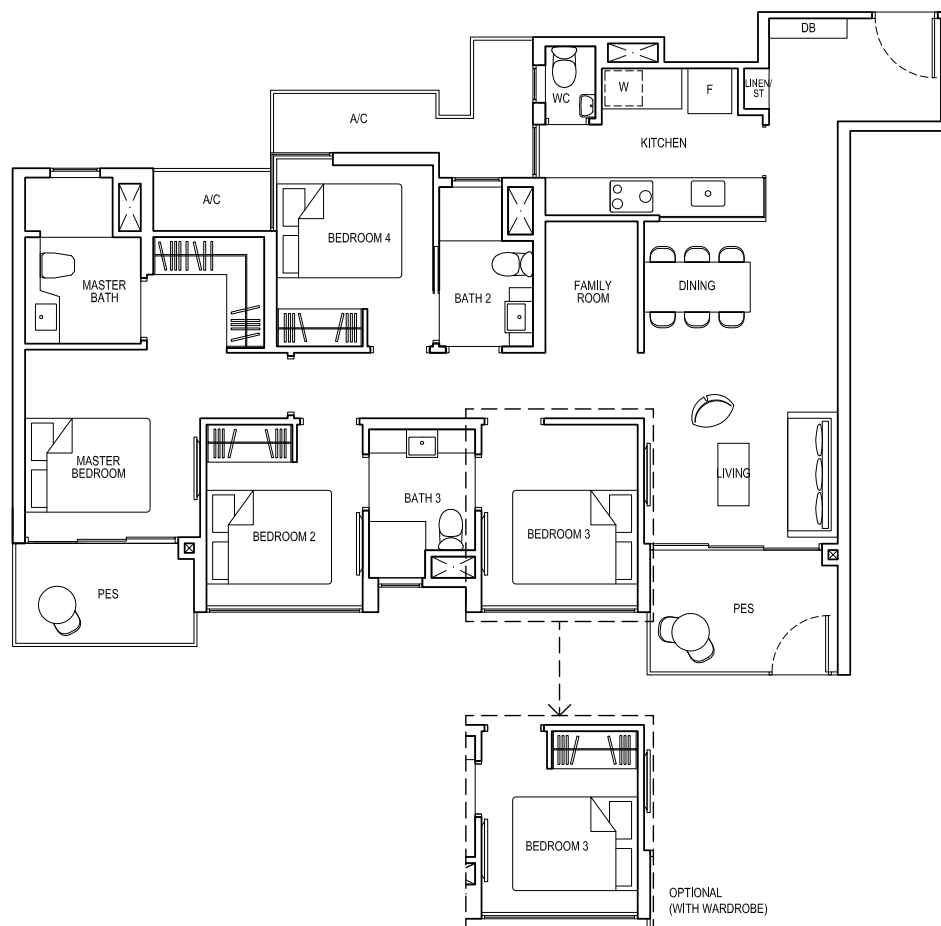
TYPE 4D1a

Area: 115 sq m (include 8 sq m A/C LEDGE, 12 sq m BALCONY)
Unit(s): #02-28 TO #13-28



TYPE 4D1a-G

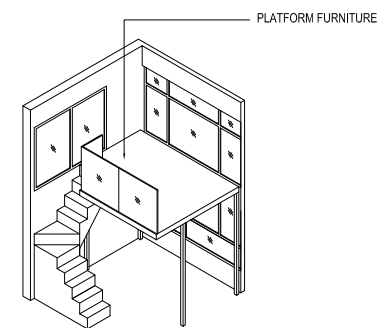
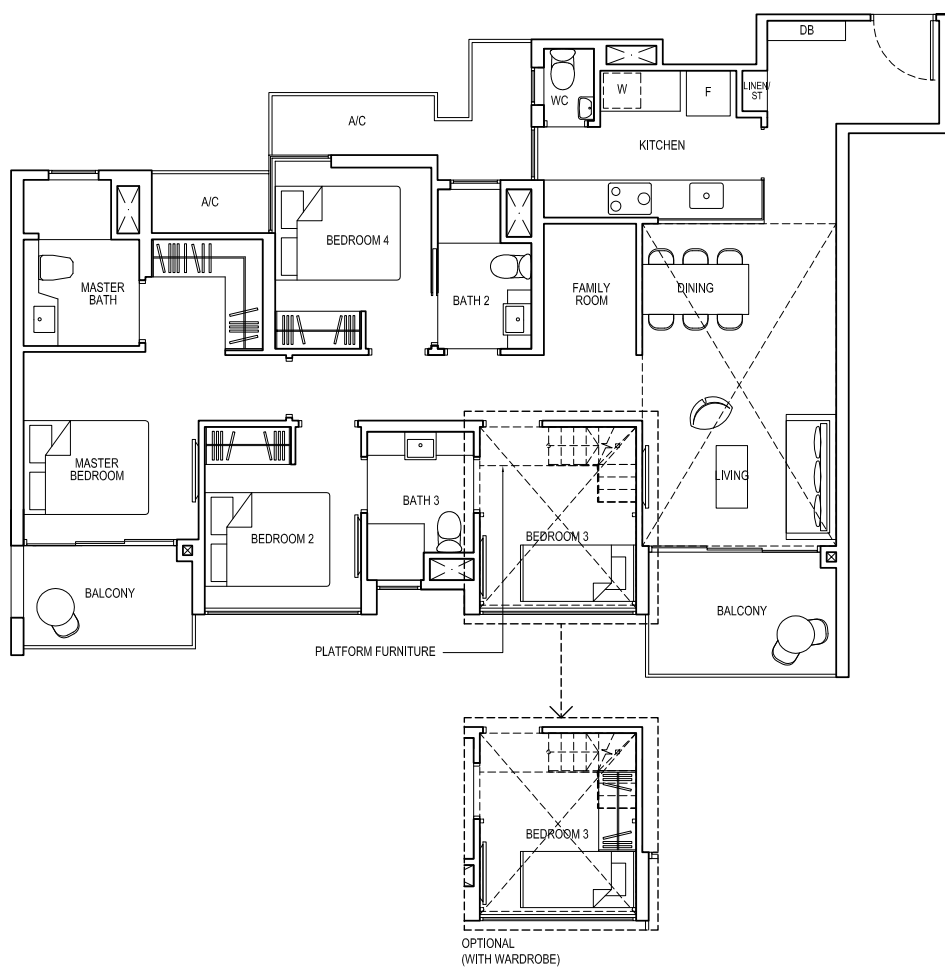
Area: 115 sq m (include 8 sq m A/C LEDGE, 12 sq m PES)
Unit(s): #01-28



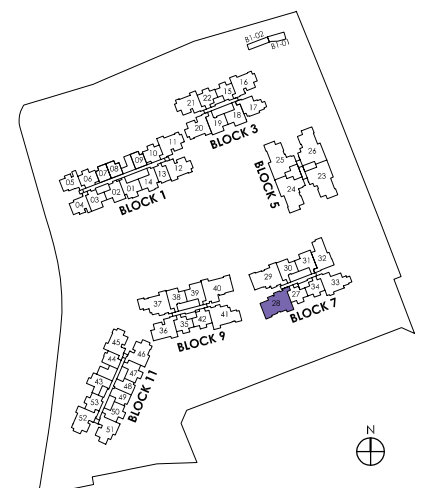
4-BEDROOM DELUXE

TYPE 4D1a-PH

Area: 140 sq m (include 8 sq m A/C LEDGE, 12 sq m BALCONY, 25 sq m VOID)
 Unit(s): #14-28



ISOMETRIC VIEW**



NOTE:

** Isometric views have excluded railing drawings for the steps
 Plans are subject to change/amendments as may be required and/or approved by the Developer and/or the relevant authorities and do not form part of any offer or contract. These are not drawn to scale and are for the purpose of visual presentation only.