

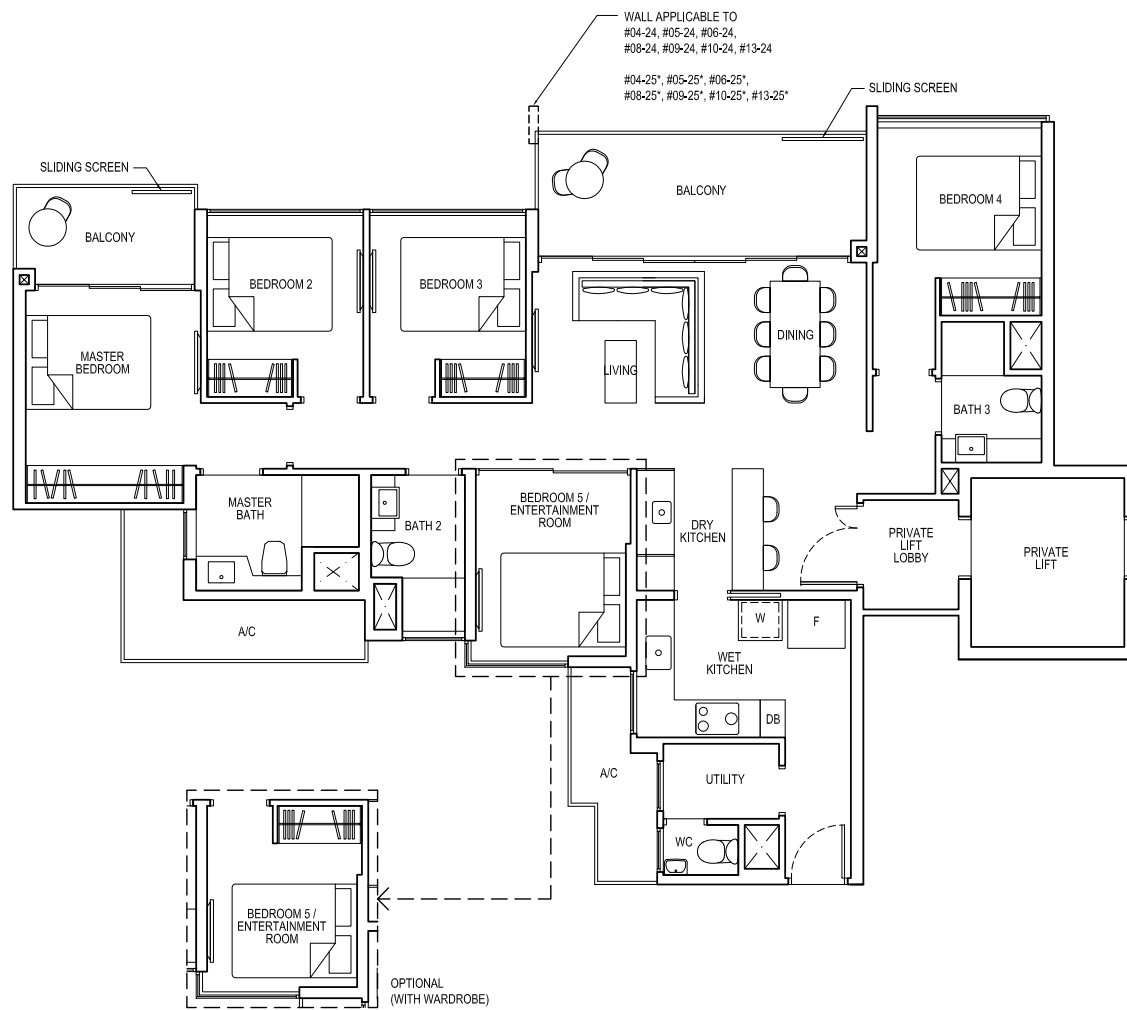
# 5-BEDROOM PREMIUM

## TYPE 5L

Area: 135 sq m (include 10 sq m A/C LEDGE, 16 sq m BALCONY)

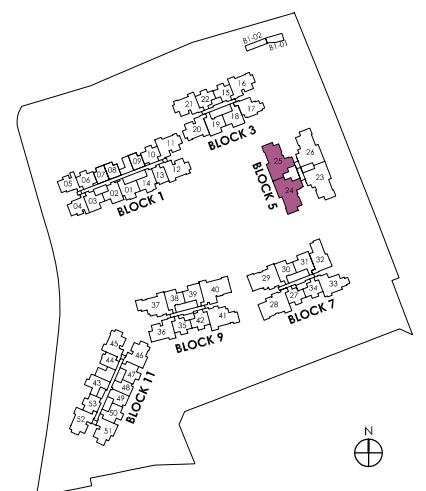
Unit(s): #03-24 TO #13-24

#03-25\* TO #13-25\*



NOTE:  
\* Mirror image

Plans are subject to change/amendments as may be required and/or approved by the Developer and/or the relevant authorities and do not form part of any offer or contract. These are not drawn to scale and are for the purpose of visual presentation only.



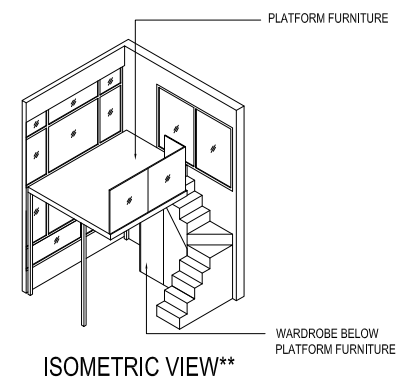
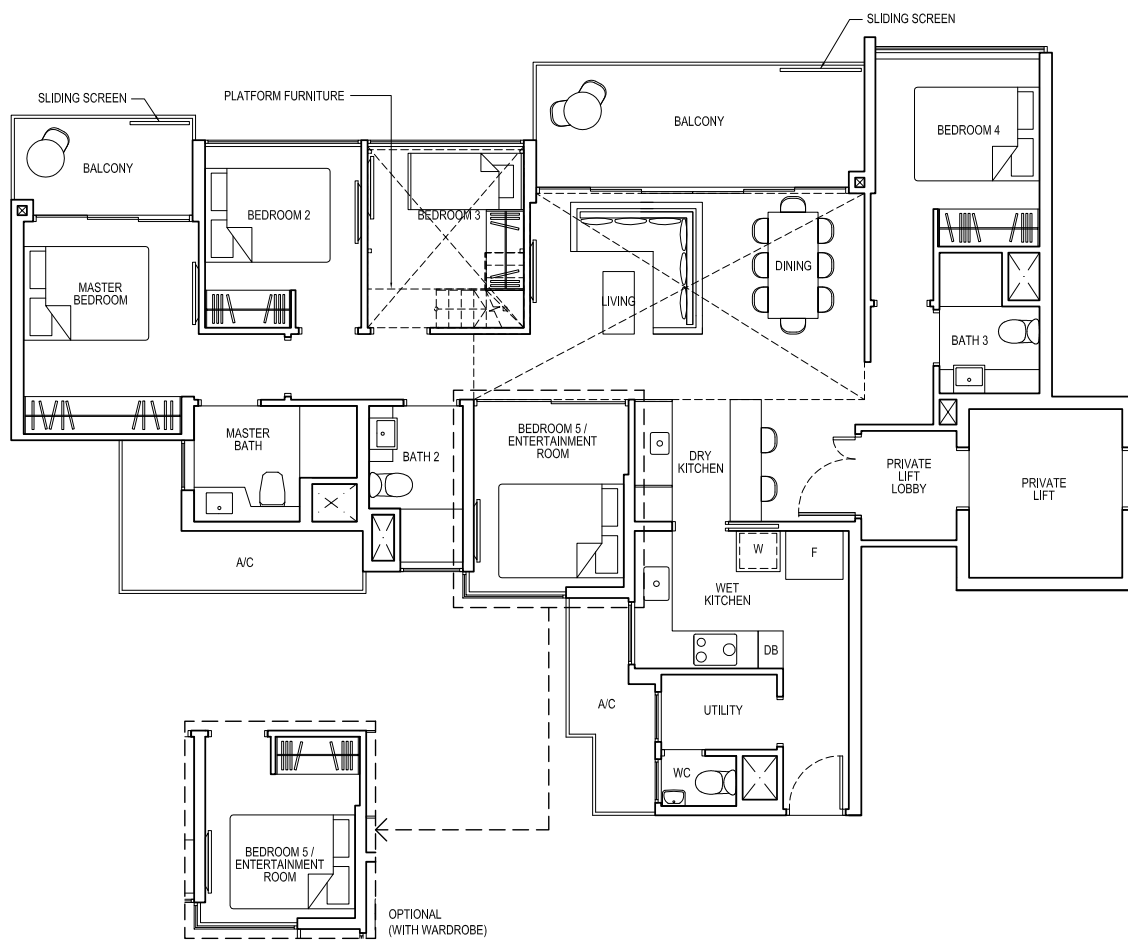
# 5-BEDROOM PREMIUM

## TYPE 5L-PH

Area: 162 sq m (include 10 sq m A/C LEDGE, 16 sq m BALCONY, 27 sq m VOID)

Unit(s): #14-24

#14-25\*

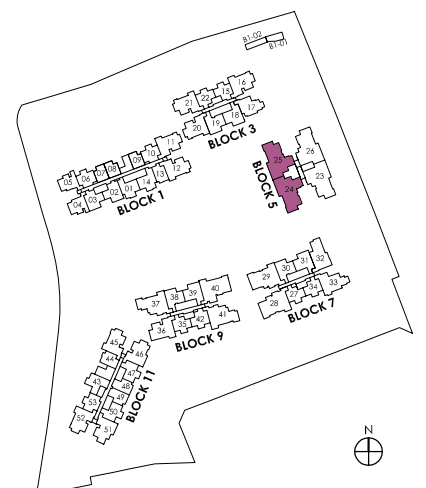


**NOTE:**

\* Mirror image

\*\* Isometric views have excluded railing drawings for the steps

Plans are subject to change/amendments as may be required and/or approved by the Developer and/or the relevant authorities and do not form part of any offer or contract. These are not drawn to scale and are for the purpose of visual presentation only.



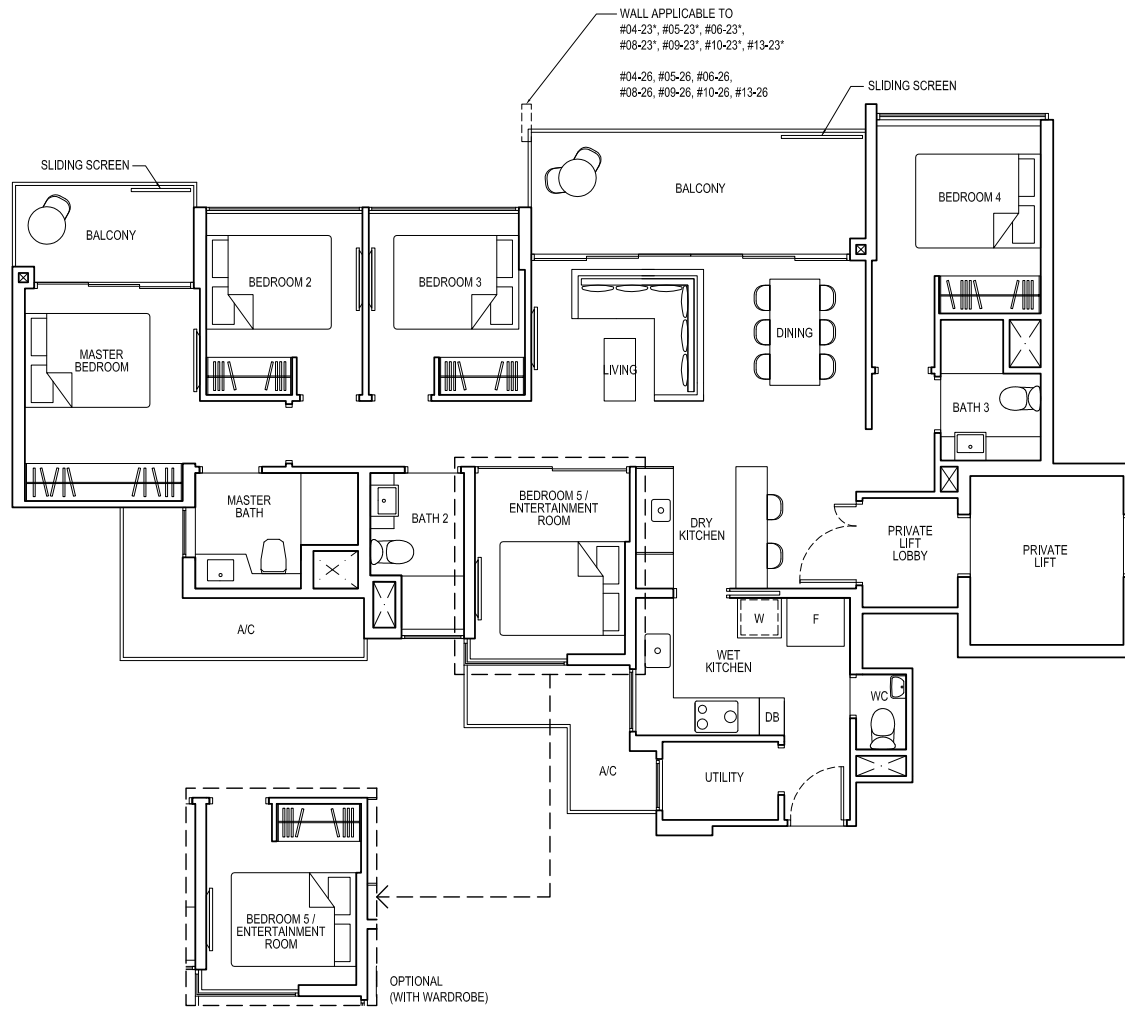
# 5-BEDROOM PREMIUM

## TYPE 5L1

Area: 135 sq m (include 11 sq m A/C LEDGE, 17 sq m BALCONY)

Unit(s): #03-23\* TO #13-23\*

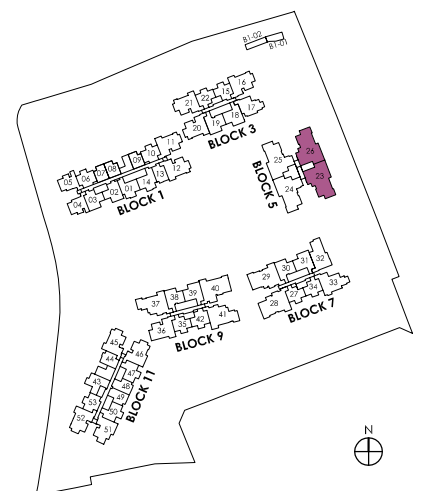
#03-26 TO #13-26



NOTE:

\* Mirror image

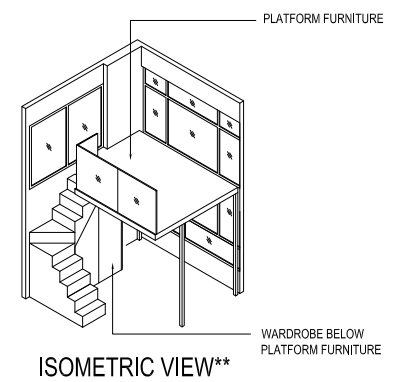
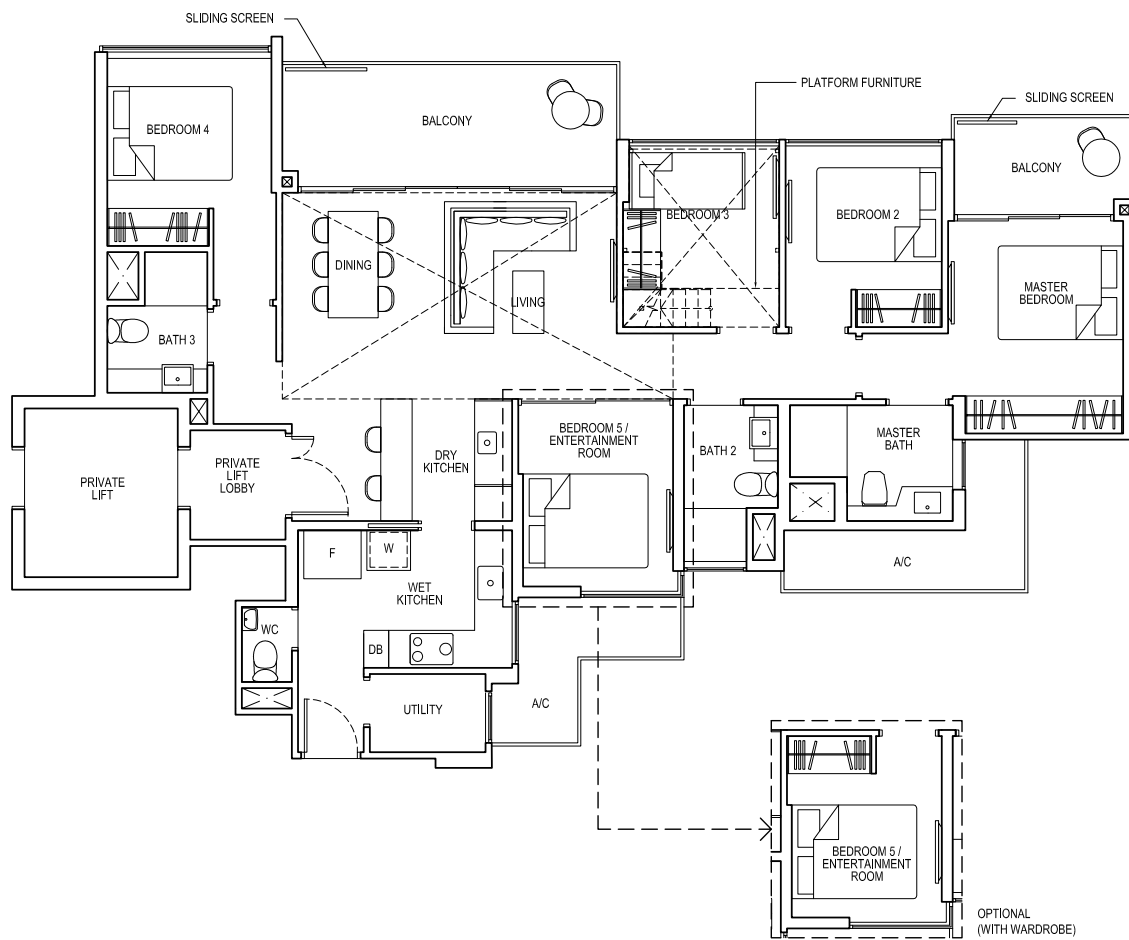
Plans are subject to change/amendments as may be required and/or approved by the Developer and/or the relevant authorities and do not form part of any offer or contract. These are not drawn to scale and are for the purpose of visual presentation only.



# 5-BEDROOM PREMIUM

## TYPE 5L1-PH

Area: 162 sq m (include 11 sq m A/C LEDGE, 17 sq m BALCONY, 27 sq m VOID)  
Unit(s): #14-23



NOTE:

\*\* Isometric views have excluded railing drawings for the steps  
Plans are subject to change/amendments as may be required and/or approved by the Developer and/or the relevant authorities and do not form part of any offer or contract. These are not drawn to scale and are for the purpose of visual presentation only.

